

The logo for Laitovo, featuring the brand name in a bold, italicized, white sans-serif font. Above the letter 'i' in 'Laitovo' is a stylized icon consisting of three concentric, semi-circular lines, resembling a signal or a protective shield.

***Laitovo***

The cover of an instruction manual for a Laitovo protective screen set. The design features a dark blue background with a large, light blue, angular graphic element that resembles a stylized 'L' or a protective barrier. This graphic is set against a background image of a modern building with a glass facade. The text is white and positioned on the dark blue background.

# INSTRUCTION

**FOR INSTALATION AND SERVICING**  
of the protective screen set for car windows Laitovo



## CONTENTS

FUNCTIONS AND SERVICING .....	3
SPECIAL ASPECTS OF SERVICING .....	3
PROTECTIVE SCREENS MAINTENANCE .....	3
STORAGE .....	3
DISMANTLING .....	3
CLIP-HOLDERS INSTALLATION	
TYPE A(1).....	4
TYPE B(2).....	4
TYPE C(3).....	5
INSTALLATION INTOCLIP-HOLDERS.....	5
INSTALLATION WITHOUT CLIP-HOLDERS.....	6
FOLDING PROTECTIVE SCREEN FOR CAR WINDOWS .....	6



## INHALT

ZWECKBESTIMMUNG UND BETRIEB .....	8
BETRIEBSBESONDERHEITEN .....	8
SCHUTZSCHIRMPFLEGE .....	8
AUFBEWAHRUNG .....	8
DEMONTAGE .....	8
EINBAU	
TYP A(1).....	9
TYP B(2).....	9
TYP C(3).....	10
EINBAU IN DIE HALTEKLAMMERN .....	10
EINBAU OHNE HALTEKLAMMERN .....	11
ZUSAMMENKLAPPBARER SCHUTZSCHIRM FÜR AUTOFENSTER .....	11



## СОДЕРЖАНИЕ

НАЗНАЧЕНИЕ И ЭКСПЛУАТАЦИЯ .....	13
ОСОБЕННОСТИ ЭКСПЛУАТАЦИИ .....	13
УХОД ЗА ЗАЩИТНЫМИ ЭКРАНАМИ .....	13
ХРАНЕНИЕ .....	13
ДЕМОНТАЖ .....	13
УСТАНОВКА ЗАЖИМОВ-ДЕРЖАТЕЛЕЙ	
ТИП А(1).....	14
ТИП В(2).....	14
ТИП С(3).....	15
УСТАНОВКА В ЗАЖИМЫ-ДЕРЖАТЕЛИ .....	15
УСТАНОВКА БЕЗ ЗАЖИМОВ-ДЕРЖАТЕЛЕЙ... 16	
РАСКЛАДНОЙ ЗАЩИТНЫЙ ЭКРАН ДЛЯ АВТОМОБИЛЬНЫХ ОКОН .....	16



## CONTEÚDOS

FUNÇÕES E MANUTENÇÃO .....	18
ASPECTOS ESPECIAIS DE MANUTENÇÃO .....	18
MANUTENÇÃO DAS CORTINAS.....	18
ARMAZENAMENTO .....	18
DESMONTAGEM .....	18
INSTALAÇÃO DOS ENCAIXES DE CLIP	
TIPO A(1).....	19
TIPO B(2).....	19
TIPO C(3).....	20
INSTALAÇÃO NOS ENCAIXES DE CLIP .....	20
INSTALAÇÃO SEM OS ENCAIXES DE CLIP .....	21
CORTINA DE PROTEÇÃO DOBRÁVEL PARA JANELAS DO CARRO. ....	21



## TABLE DES MATIÈRES

DESTINATION ET EXPLOITATION .....	23
PARTICULARITÉS D'EXPLOITATION .....	23
SOIN DES ÉCRANS DE PROTECTION .....	23
STOCKAGE .....	23
DÉMONTAGE .....	23
INSTALLATION DES SERRE-JOINTS	
TYPE A(1).....	24
TYPE B(2).....	24
TYPE C(3).....	25
INSTALLATIONS DANS LES SERRE-JOINTS .....	25
INSTALLATION SANS SERRE-JOINTS .....	26
ECRAN DE PROTECTION PLIANT POUR LES VITRES D'AUTOMOBILE.....	26

## FUNCTIONS AND SERVICING

Protective screens for car windows are designed for car saloon protection, also protection of the passengers inside from the sun, insects, glass fragments and protection of a private life in a vessel.

## SPECIAL ASPECTS OF SERVICING

- It is not recommended to use the front side protective screens on-the-ride
- It is not recommended to flick cigarette ash, dump the trash out of the windows with protective screens installed, if they are not equipped with special cutaways. It may cause textile cover damage.
- In winter (during cold weather), in a not warmed-up saloon, the material of protective screens may hang down (textile peculiarity). This defect vanishes after your warm-up the vehicle.
- It is not recommended to make a physical impact on textile cover of protection screens (jamming, transfixion etc.) as it may cause its damage.

## LAITOVO PROTECTIVE SCREENS MAINTENANCE

In case of impurity of protective screens surface (material 2) it is recommended to wash it in the stream of water (high pressure stream possible), then dry it.

In case of impurity of protective screen textile surface (other materials) it is recommended to wipe it with a wet tissue or a sponge.

In case of substantial impurity the usage of mild detergents or soaps.

## LAITOVO PROTECTIVE SCREENS STORAGE

A set of Laitovo protective screens when not used doesn't require any special storage conditions and can be stored in a convenient place.

It is recommended to store protective screens in a special bag for Laitovo protective screens

Protection screens and components should not be stored close to the open fire, sharp and cutting objects and in high-humidity premises.

## PROTECTIVE SCREEN DISMANTLING

### For protective screens installed into the clip-holders:

1. Grasp the loop in the upper part of a screen.
2. Slightly pull the edge of the screen toward the center so that it can be taken out of the clip-holder.
3. Take off the protection screen out of the holder-zone of a clip-holder.
4. Take off the protective screen out of the rest of clip-holders.

### For protective screens installed into the brace:

1. Grasp the loop in the upper part of a screen.
2. Slightly pull the edge of the screen toward the center.
3. Take out the upper part of the screen.
4. Take out the entire protective screen.

Tag sample

Protective screen for car windows AUDI 100 4G 4A C4 AVANT 5D STATION WAGON (1990-1994) FD (№2 STANDART)		
Type of fixing : C		Tel. +49 (0)40-229419-0 +49 (0)40-95063310
EN	FD-A-686-1-2	info@laitovo.de
Made by request of Laitovo Manufactory Trading & Service GMBH Ferdinandstrasse 25-27 D-20095 Hamburg Germany		

type of fabric

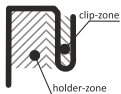
package

type of fixing

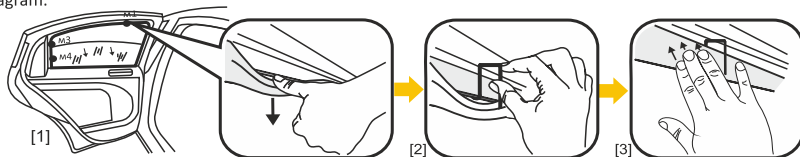
It is strongly recommended before installing clip-holders and protective screens to make sure that you have purchased a set that is in congruence with your car model. Try to fit the protective screen to car windows beforehand (look p.2 for example). There are 3 major fixing types.

TYPE OF FIXING

A(1)

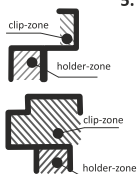


1. While installing open the door and put down the glass in the lower position [1];
2. Unbend a rubber weatherstrip located in the door window frame in the 1st position of installation of a clip-holder [1] to bare a window-frame collar\*;
3. Fasten the clip-holder to the collar by the clip-zone [2];
4. Return a rubber weatherstrip into the original position [3];
5. Repeat steps 2-4 in the rest of positions\* of clip-holders installing, according to the clip-holders installation diagram.

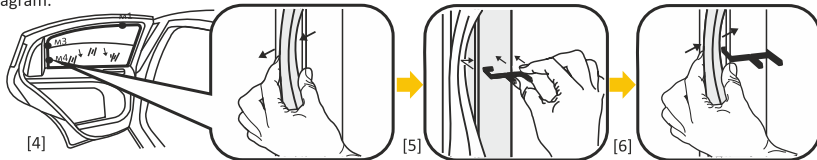


TYPE OF FIXING

B(2)



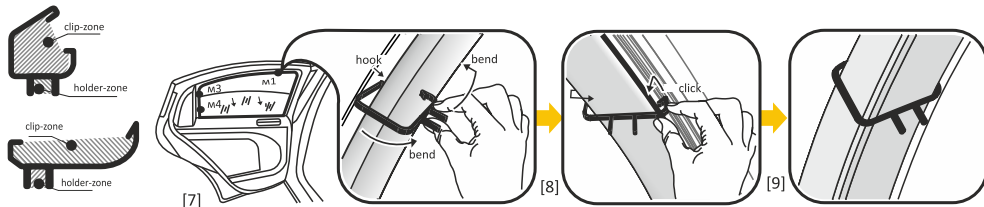
1. Open the door and put down the glass of a vehicle in the lower position [4];
2. Take out a rubber weatherstrip located in the vehicle window frame in the 1st position\* of the clip-holder installation [4];
3. Hook the clip-holder to the window-frame collar [5];
4. Install a rubber weatherstrip into the original position [6];
5. Repeat steps 2-4 in the rest of positions\* of clip-holders installing, according to the clip-holders installation diagram.



TYPE OF FIXING

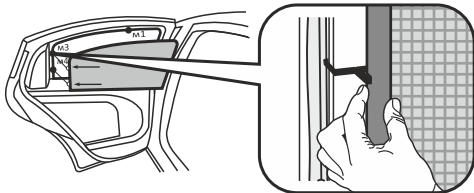
C(3)

1. While installing, open the door and put down the glass of a vehicle into a lower position [ 7 ];
2. In the installation position\* from the saloon side hook the edge of plastic cover by a special hook (included in the package);
3. Put a clip-holder into the bent edge of plastic cover [ 7 ];
4. Put the bend of a clip-holder to the edge of plastic cover and click the clip-holder [ 8 ], [ 9 ];
5. Take the hook, bend the edge of plastic cover, hook the clip-holder by the second bracing, take out the hook.
6. Repeat steps 2-4 in the rest of positions\* of clip-holders installing, according to the clip-holders installation diagram.



### Protective screen installation into clip-holders

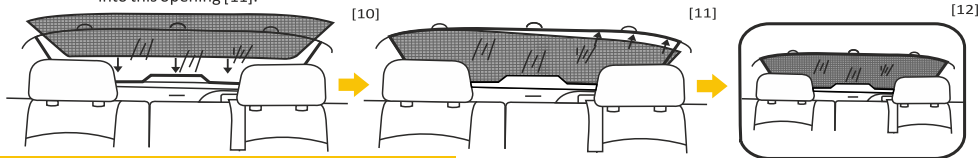
1. Uplift the glass
2. Insert the frame of the protective screen into the clip-holders. It is better to be done one at the time: first the side edge of the screen, then the upper edge. The lower edge of the protective screen must be located on the cover without attachment to the clip-holders.



## Protective screens installation without clip-holders

Protective screen installation onto the rear windshield.

1. Put the lower part of the protective screen behind the breaklight (if there is any), behind the wiper cover (if there is any) or put it until tight into the lower part of the window adjoin the cover [10], [11];
2. Push the sides of the protective screen to the crossbar cover [11];
3. Tuck the upper part behind the car cover with the special hook (included in the package). To do this, carefully insert the hook between the frame (glass) and the cover, slightly pull the plastic cover and insert the frame of the protective screen into this opening [11].

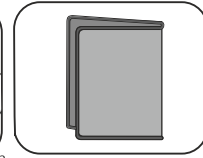
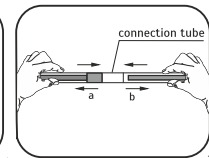
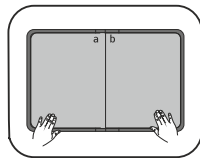


## FOLDING PROTECTIVE SCREEN FOR CAR WINDOWS

A **FOLDING PROTECTIVE SCREEN** has additional advantages for its transportation and storage due to the reduction of its dimensions. Fixation of two folding surfaces is completed with the help of the connection tube, located inside the cased frame.

### ASSEMBLING OF THE FOLDING PROTECTIVE SCREEN:

1. Unfold the screen (picture 1).
2. Insert detail a into the connection tube b in the upper part of the screen, as shown in picture 2 (connection tube is located under the rubber).
3. Fix the connection tightly
4. Repeat the same actions with the connection in the lower part of the screen.
5. The screen is assembled.

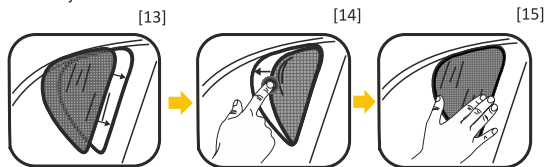


### DISASSEMBLING OF THE FOLDING PROTECTIVE SCREEN

1. Take the screen with both hands from different sides of the connection as shown in picture 2.
2. Pull to the opposite directions from the connection, until the inside frame comes out of the connection.
3. Repeat the same actions with the lower part of the screen.
4. Fold the screen (picture 3).

Protective  
screen  
installation  
onto the vent

1. Install the protective screen with its widest part into the opening of the rear vent in the close proximity to the glass;
2. Without taking out the installed edge, slightly push the opposite edge of the protective screen toward the center to slightly deform the screen [14] and put the protective screen into the rear vent opening;
3. Slightly push the frame of the protective screen and adjust with the window frame of the rear vent.



Should you have any questions please contact us:

Tel: +49 (0)40 950 633 10

E-mail: [info@laitovo.eu](mailto:info@laitovo.eu)

**Attention!!! Do not take off or install clip-holders and protection screens on-the-ride.**

*\*installation positions noted in the diagram are relative, the exact position can be found in the diagram attached to protection screen set.*

## CONTACTS:



+49(0)40 950 633 10  
E-mail: [info@laitovo.eu](mailto:info@laitovo.eu)  
[www.laitovo.eu](http://www.laitovo.eu)



8 (800)555-01-20  
e-mail: [info@laitovo.ru](mailto:info@laitovo.ru)  
[www.laitovo.ru](http://www.laitovo.ru)